

APPLICATIONS

- Liquid & gaseous mediums
- Corrosive environments
- Oil & Gas applications
- Chemical & Petrochemical
- Food & Beverages
- Nuclear power plants

FEATURES

- All SS measuring system
- External Zero adjustment
- Electric contact version
- Dry / liquid filled



DIAPHRAGM DIFFERENTIAL PRESSURE GAUGE, ANI12

DESCRIPTION

General

Design : EN 837-3

Accuracy : $\pm 2.5\%$ of full scale

Ambient temperature : -40...+65°C [without dampening liquid]
: -20...+65°C [with dampening liquid]

Service temperature : 200°C max.

Static pressure limits : 2 bar up to 250 mmWC
6 bar above 250 to 600 mmWC
10 bar above 600 to 6000 mmWC
40 bar above 6000 mmWC to 4 bar
60 bar above 4 bar
(Static Pressure Both side)

Material of construction

Sensing element : Diaphragm

Case & Ring material : AISI 304 SS (Bayonet type)

Diaphragm : AISI 316L SS

Chamber : AISI 304 SS

Fastener : AISI 304 SS

Movement mechanism : AISI 304 SS

Dial : Aluminum, black graduation on white background

Pointer : Micro-zero adjustable, aluminum, black powder coated

Gaskets & filling plug : Neoprene

Window : Shatterproof Safety Glass

Standard version

Dial size : DN100 / DN125 / DN150

Range : 25 mbar...0...25 bar

Mounting pattern : Direct, Bottom connection

Process connection : 1/4" NPT (F) x 2 Nos.

Ingress protection : IP 65

Execution : Dry / Dry but fillable

Filled versions

Glycerin

Accuracy : $\pm 4.0\%$ of full scale

Dampening liquid : Glycerin 99.7%

Electric Contact version

Accuracy : $\pm 4.0\%$ of full scale

Window : Poly carbonate dome

Switch : 1NO; Make contact

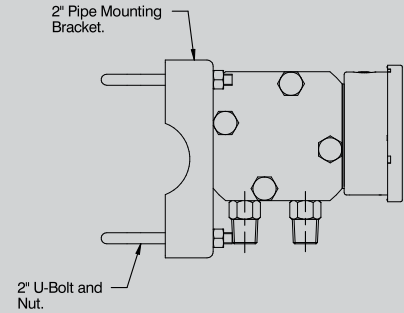
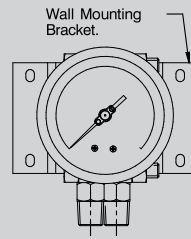
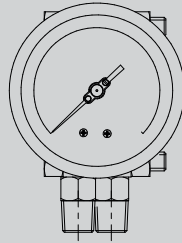
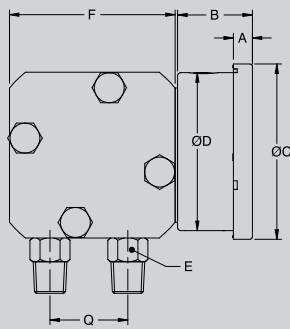
Dampening liquid : Dielectric oil [Optional]

Temperature effect

When temperature of the measuring system deviates from reference temperature (+20°C) :
max error $\pm 0.4\%$ / 10K of true scale value.

DIMENSIONAL DRAWING

Direct bottom



NOTES
1. Drawing not to scale. All dimensions are in mm.

DN	A	B	ØC	ØD	E	F
100	12	48	111	100	A/F-22	Sq. 2.88
150	15	48	161	149	A/F-22	Sq. 2.88

ORDERING CODES

MODEL

ANI12 Single Diaphragm Differential Pressure

ANI12

Gauge DIAL SIZE

D4 4" / 100 mm **D6** 6" / 150 mm

D4

MOUNTING

M1 Direct bottom **M2** Direct bottom with Back flange **M5** Center back with front flange
M4 Bottom with Yoke/2" Pipe mounting bracket

M1

CONNECTION

P24 1/4" NPT (F) **P07** 1/2" BSP (M) **P08** 1/2" NPT (M)
P20 M20 x 1.5 mm (M)

P24

CASE FILLING

F1 Dry **F2** Dry but fillable **F3** Glycerin filled
F4 Silicon oil filled **F5** Dielectric oil filled

F1

WETTED PARTS

S01 AISI 304 SS **S02** AISI 316 SS **S03** AISI 316L SS
S05 Monel 500

S02

INGRESS PROTECTION

I1 IP 65

I1

RANGE

0-10 bar Please mention range required with the measurement unit
[ANI offer in all types of National & International measurement units, e.g. kg/cm², psi, kPa, etc. with single or dual scales]

0-1 bar

ELECTRIC CONTACT

N01 Magnetic contact - 1 NC **N02** Magnetic contact - 1 NO **N03** Magnetic contact - 1 NC / 1 NO
N04 Magnetic contact - 2 NC **N05** Magnetic contact - 2 NO **N06** Magnetic contact - 1 NO / 1 NC
N07 Inductive contact - 1 NC **N08** Magnetic contact - 1 NO **N09** Inductive contact - 1 NC / 1 NO
N10 Inductive contact - 2 NC **N11** Inductive contact - 2 NO **N12** Inductive contact - 1 NO / 1 NC
N13 1 SPDT **N14** 1 DPDT **N15** Booster relay for 5A output

XXX

OTHER OPTIONS

E16 5 - point calibration certificate **E31** Custom designed dial **E32** Dial tag marking
E17 Material test certificate 3.1 **E21** Material test certificate 2.2 **E28** SS tag plate, AISI 316 SS
E27 SS tag plate, AISI 304 SS **E33** AISI 316 SS case & ring

E16/E27

Ordering Example : ANI12.D4.M1.P24.F1.S02.I1/0-1 bar/E16/E27